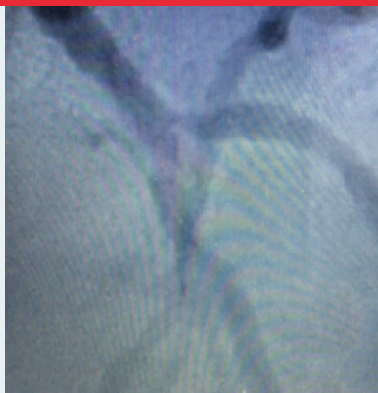


TRYTON Side Branch Stent Built For Bifurcation

- FEATURED CASE -

Treating Complex Large
Bifurcations Predictably

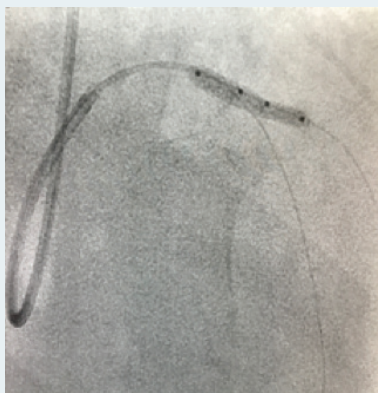
Baseline



Femoral approach is used on a 76 year old patient with moderate CAD. There was a Medina 1.0.1 LAD/D1 bifurcation lesion.

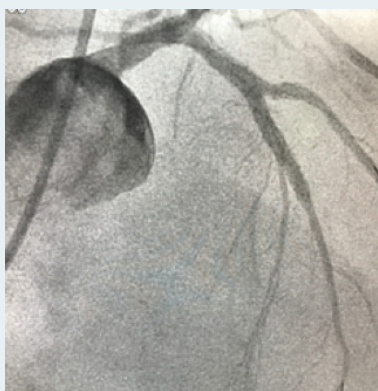
Aggressive predilatation of the side branch lesion is performed first.

Tryton Deployed



Tryton is positioned with the two middle markers "straddling" the ostium of the bifurcation. This is followed by the POT with a 2.5/12mm NC balloon for optimal appositioning of the proximal part of Tryton.

Final Results



A 3.0/33mm DES is deployed in the LAD, slightly overlapping the proximal part of Tryton.

Kissing balloon technique using 2.5/8mm and 3.0/12mm NC balloons polishes the result.

Key Takeaway

"Total procedure time was about 28-minutes. I am very satisfied with the ease of use. This simplified treatment takes out the complexity treating bifurcations. All you have to do is follow the recipe" says Dr. Armbruster.

