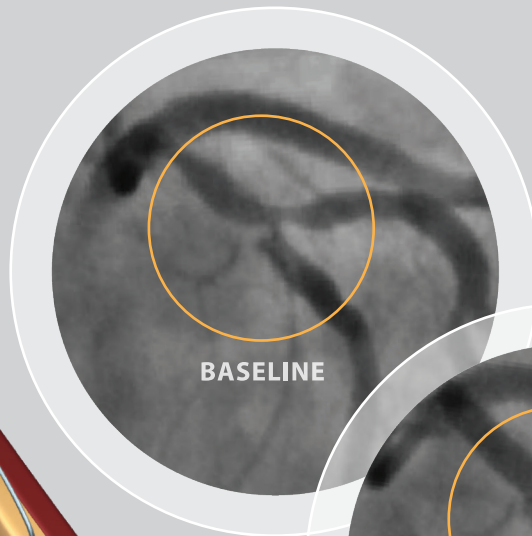
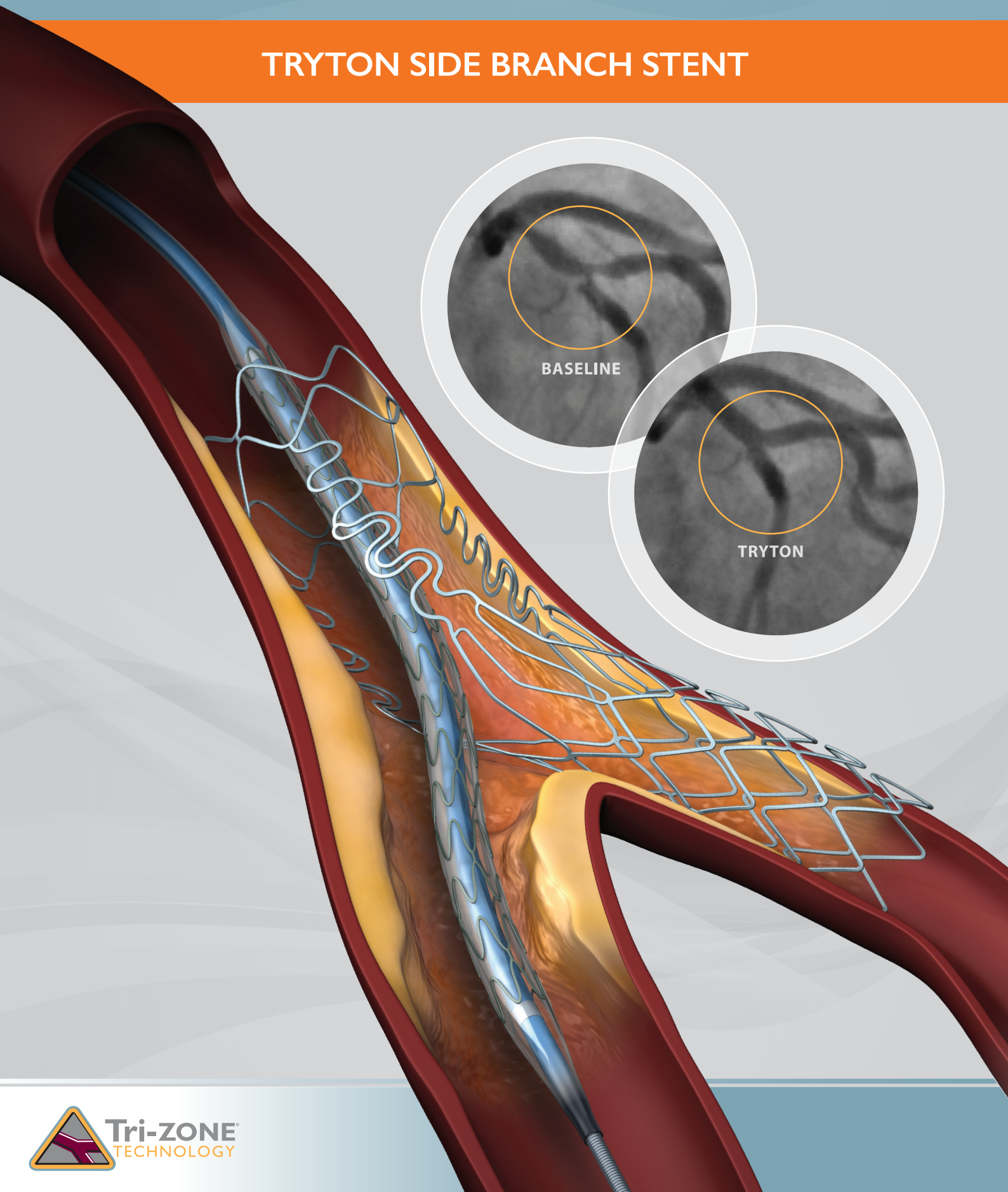
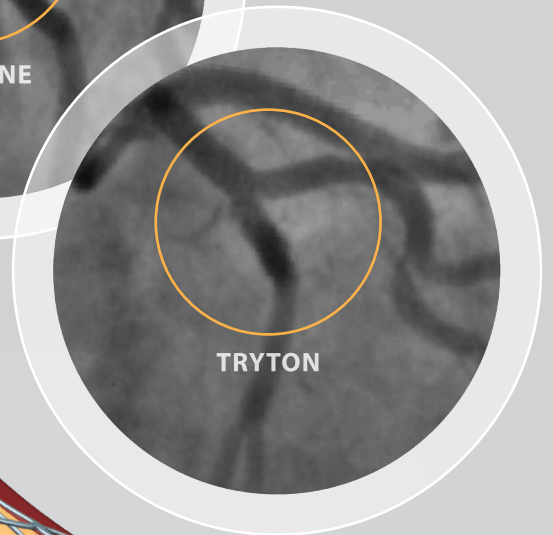


**TRYTON SIDE BRANCH STENT**



BASELINE



TRYTON



PATENTED TRI-ZONE® TECHNOLOGY UNIQUELY ADDRESSES BIFURCATION ANATOMY



The Tryton Side Branch Stent is specifically designed to actively treat, protect and secure the entire bifurcation lesion, offering ease of implantation and complete main vessel stent integration.

### MAIN BRANCH ZONE

Minimal metal-to-artery ratio

### TRANSITION ZONE

Customized radial strength and ostial scaffolding

### SIDE BRANCH ZONE

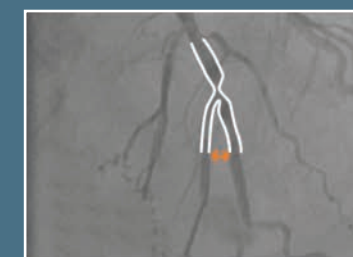
Workhorse stent treatment and security

## Accommodates Varying Bifurcation Angles and Vessel Types

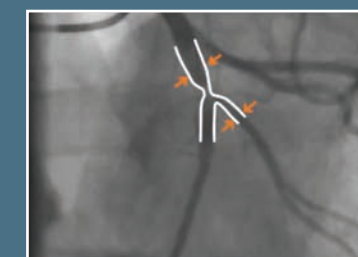
WIDE ANGLE



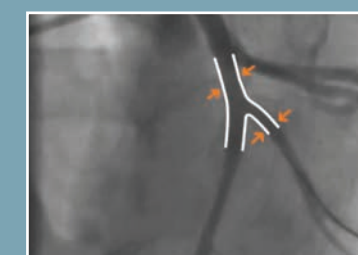
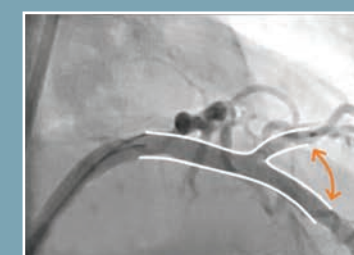
NARROW ANGLE



LARGE DIAMETER DIFFERENCE



BASELINE



TRYTON

PREDICTABILITY



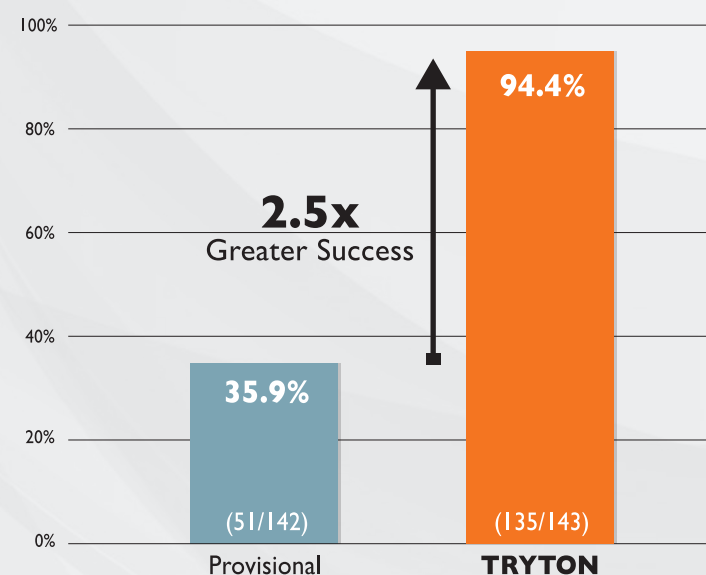
EASE OF USE AND PROCEDURAL CONTROL RESULT IN PREDICTABLE OUTCOMES

RESULTS



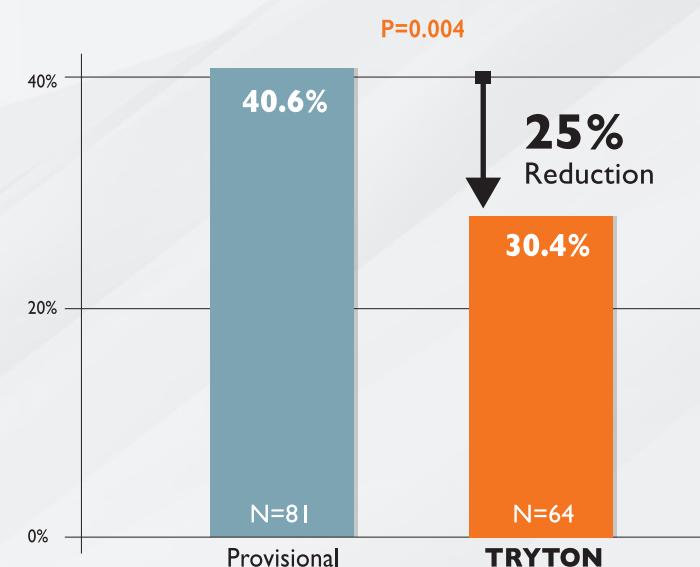
PIVOTAL TRIAL DEMONSTRATES SUPERIOR ACUTE & LONG-TERM PATENCY OVER PROVISIONAL STENTING

## Procedural Acute Device Success<sup>1,2</sup>

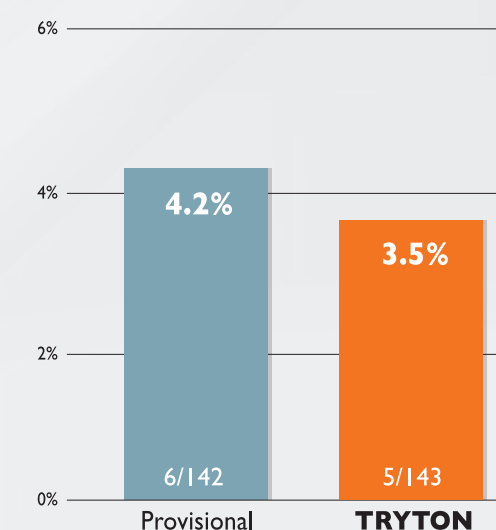


Acute Device Success  
Contributes to  
Long-Term Patency and  
Low TVR

## Side Branch In-Segment % Diameter Stenosis at 9 Months<sup>1</sup>



## Clinically Driven TVR at 9 Months<sup>1</sup>



<sup>1</sup>RCT post-hoc intended cohort analysis SB RVD  $\geq 2.25$ mm by QCA

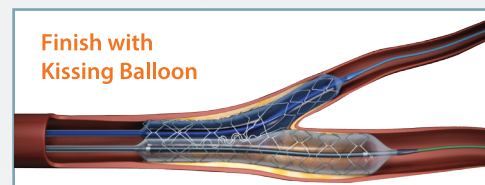
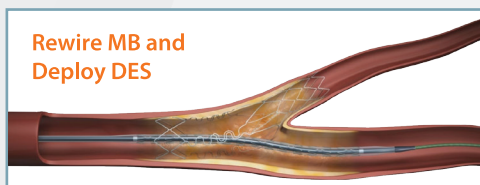
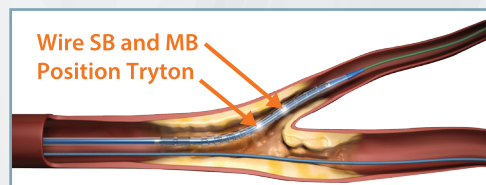
<sup>2</sup>Defined as 30% residual side branch diameter stenosis by QCA

<sup>1</sup>RCT post-hoc intended cohort analysis SB RVD  $\geq 2.25$ mm by QCA



# THE TRYTON SIDE BRANCH STENT COVERAGE. PREDICTABILITY. RESULTS.

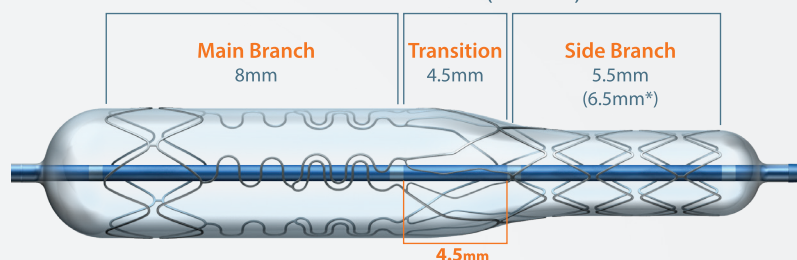
## DEPLOYMENT:



## FEATURES AND SPECIFICATIONS:

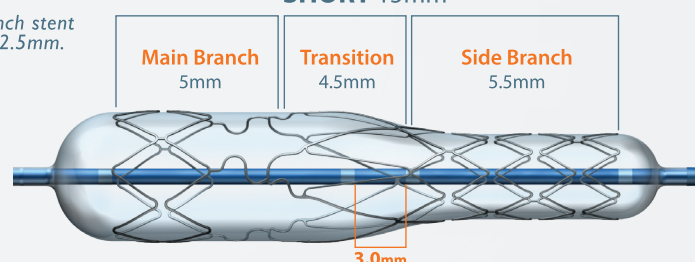
- Two size options: STANDARD 18 mm (\*19mm) and SHORT 15mm for varying angulations and landing zones
- Low-profile CoCr design compatible with 5F or 6F guide catheters
- Precision markers designed for optimal ostial scaffolding
- Compatible with workhorse drug eluting stents

### STANDARD 18mm (19mm\*)



\*For side branch stent diameter of 2.5mm.

### SHORT 15mm



Reference Number	Diameter SB - MB (mm)	Length (mm)	Minimum Guiding Catheter Diameter	Maximum Post-expansion Diameter SB - MB (mm)	Nominal Pressure (atm)	RBP (atm)
STANDARD						
T5-2525-19I	2.5 - 2.5	19	5F	3.0 - 4.0	8	14
T5-2530-19I	2.5 - 3.0	19	5F	3.0 - 4.0	10	14
T5-2535-19I	2.5 - 3.5	19	5F	3.0 - 4.0	10	14
T5-3035-18I	3.0 - 3.5	18	6F	4.0 - 4.5	10	14
T5-3540-18I	3.5 - 4.0	18	6F	4.0 - 4.5	8	14
SHORT						
T5-3035-15I	3.0 - 3.5	15	6F	4.0 - 4.5	8	14
T5-3540-15I	3.5 - 4.0	15	6F	4.0 - 4.5	10	14

CE Marked and FDA Approved.

**TRYTON**<sup>®</sup>  
Medical

BUILT FOR BIFURCATION

Corporate Headquarters  
1000 Park Forty Plaza  
Suite 325  
Durham, NC 27713 USA  
Phone: + 1.919.226.1490  
Fax + 1.919.226.1497

Distributed by:

Tryton Medical B.V.  
De Tweeling 20-22  
5215 MC 's Hertogenbosch  
The Netherlands